

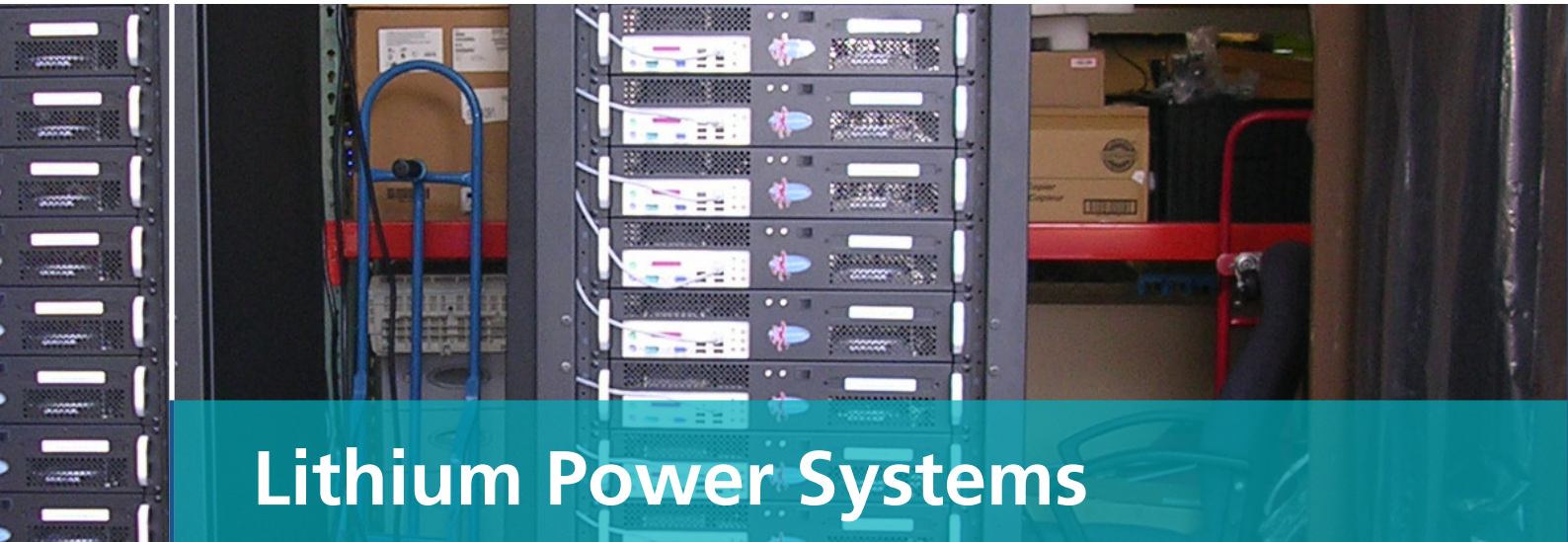


## Lithium Power 48V - 20Ah /40Ah



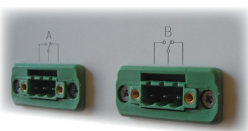
Member of the WETAC Group

*einfach stark.*



# Lithium Power Systems

Lithium Power, the power of the future? Indeed, Lithium shows great potential but also need some special care to provide their maximum power and number of cycles. That is why BSOL offers a complete system as a turn-key solution rather than individual cells.



Two potential free alarm contacts

## Lithium Powered backup

Lead Acid batteries are excellent products for the majority of backup applications. However, every now and again some special requirements call for another technology. As a leading supplier of backup power to the industry, BSOL listen to its customers and has developed a product that meets these extraordinary requirements such as:

- Smaller footprint and weight
- Higher energy density
- Wider operational temperature range
- Communication interface
- Fast charge capability
- Etc.

## Technology

Although with a slightly lower energy density than traditional Li-Ion, BSOL has selected Li-Fe as the technology for its 19" rack mount solution. The additional safety and high number of cycles that this technology provides, makes this the most stable electrochemical system in the Lithium family. The system can deliver high currents and allow for fast charging and is very suitable for applications in military, telecommunication, telemetry, UPS and Solar systems.

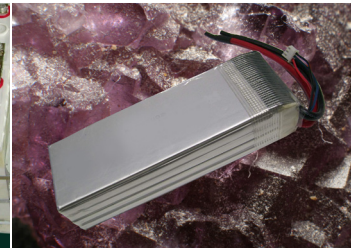
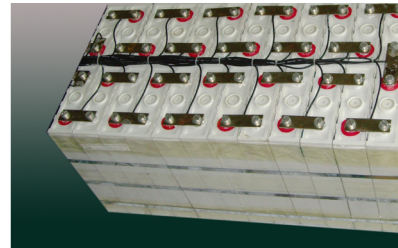
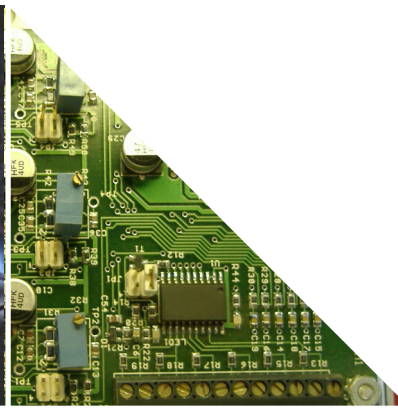
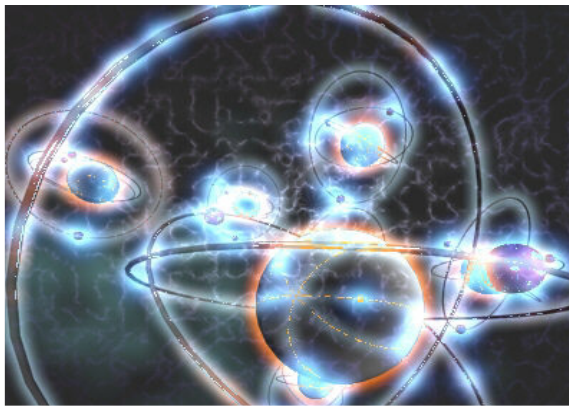
## Superior Features:

- Friendly to the Environment
- Long Shelf Life and Fast Recharge time
- High Energy Efficiency with no memory effect
- Wide operating temperature
- Smart Monitoring and integrated cell balancing
- 1/3 the weight with twice the run-time compared to VRLA batteries
- 3 Year warranty
- 2000 life cycles
- Custom design possible



Interface boxes available for:

- USB
- Internet
- GPRS



**Main units:**

**LFP 16S2P:**

- Nominal voltage: 48V
- Nominal capacity: 40Ah
- Max. peak discharge current: 60A @ 15sec.

**LFP 16S1P:**

- Nominal voltage: 48V
- Nominal capacity: 20Ah
- Max. peak discharge current: 30A @ 15sec.

**Other specifications:**

- Dimensions: 19" rack mountable unit 3U high, depth 45cm
- Operating temperature: -20°C to +65°C
- 3-LED status indications for 'Charging', 'Fully Charged' and 'Error'
- 2 potential free contacts for external alarm handling
- Cell balancing for optimal cell charging.
- BMS processor with RS485 port showing the following information via the optional USB-box and PC software:
  - Individual cell voltage
  - Balancing status of the cells
  - Maximum charge- and discharge currents

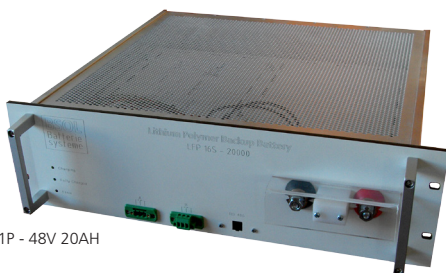
**Options:**

- Ethernet interface
  - Monitor your unit using a web browser
- GPRS communication module
  - Transmits SMS messages in case of any errors
- USB bus and PC software
  - Standard bus for PC connection

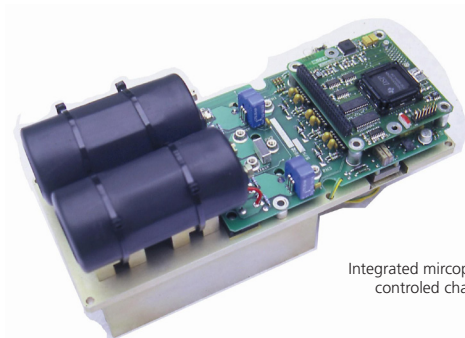
The above options are connected via the standard RS485 serial interface and use a small external box to connect the appropriate interface and protocol.

**Factory Options**

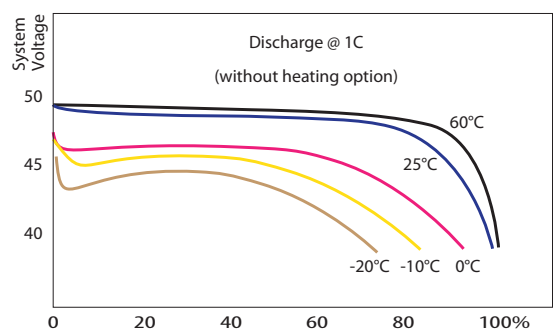
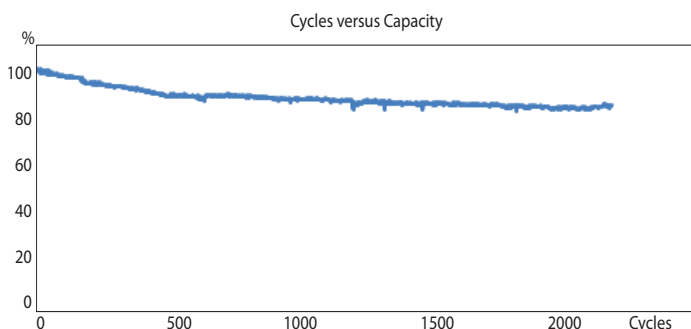
- Integrated heater to expand the operational temperature range down to -40°C
- Integrated charger resulting in a recharge time of <3,5 hours for a fully discharged module
- LCD display indicating operating temperature, voltage, current, etc.



LFP 16S1P - 48V 20AH



Integrated microprocessor controlled charger.



Lithium products:



19" rack-mount modules



High-Power EV and Standby modules



VRLA shaped batteries



LCD-Touch screens, BMS/BMU controllers



*einfach stark.*

**BSOL Batteriesysteme GmbH**  
Siemensstraße 13 - 17  
40789 Monheim  
Germany  
Tel.: +49 (0)2173 330330  
Fax.: +49 (0)2173 330333  
[www.bsol.de](http://www.bsol.de) - [info@bsol.de](mailto:info@bsol.de)